

## USING DRUMAGOG TO TRIGGER OCEAN WAY PRO TOOLS, MAC

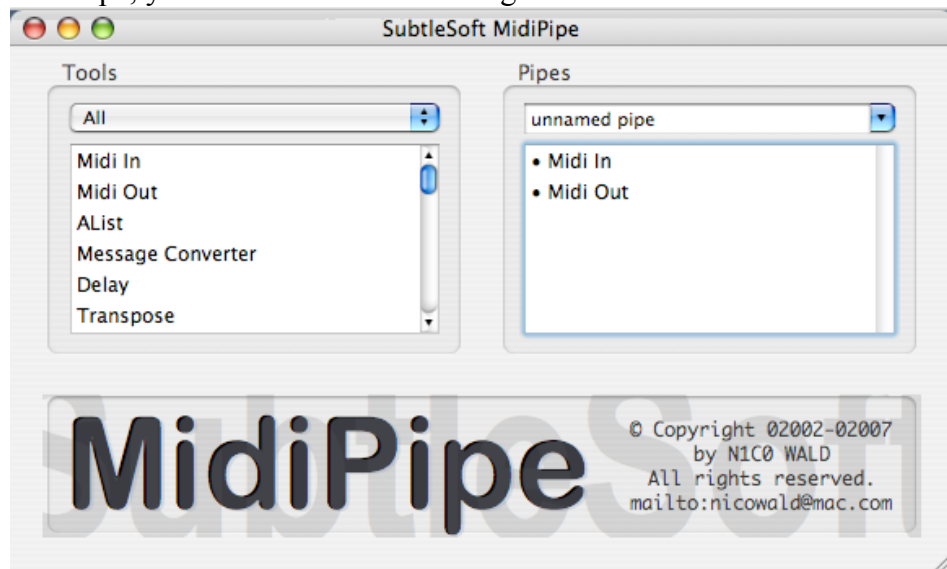
### 1. Download/install MIDI Pipe.

<http://homepage.mac.com/nicowald/SubtleSoft>

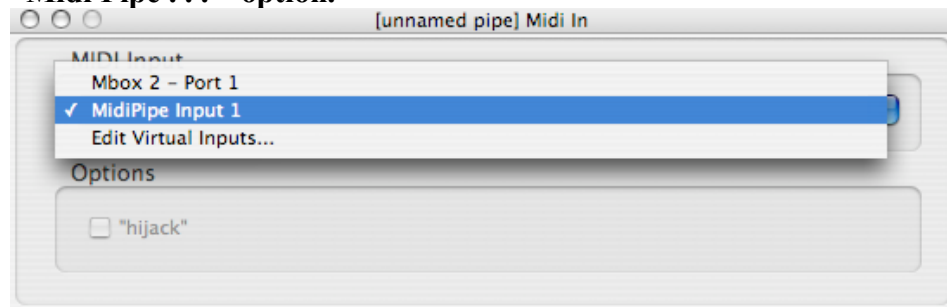
### 2. Launch MIDI Pipe.

### 3. Drag/drop an input and output from the left window to the right window. The right window MUST list “MIDI In” and “MIDI Out” in THAT ORDER.

You can set up multiple pairs of MIDI In’s and Out’s, so that once you are working in Pro Tools you can use Drumagog on more than one audio track at a time. It is recommended to make a MidiPipe setup of ten to twenty virtual ins and outs, following these directions, and then save in MidiPipe. By saving a configuration in MidiPipe, you can then load this configuration for each new session.



### 4. Double-click “MIDI IN” and “MIDI OUT” in the “Pipes” list and choose the “Midi Pipe . . . “ option.



Repeat steps 3 and 4 for each desired set of virtual inputs/outputs, always selecting the next Input or Output number. (For your second set of virtual in/out, you will select “MidiPipe Input 2,” “MidiPipe Input 3” for the third, etc.)

LEAVE MIDI PIPE OPEN.

**5. Open Pro Tools.** Start a new session or open an existing one.

**6. In ProTools, go to Setup -> MIDI -> Input Devices.** Select all “MidiPipe Output” options. (Note that MidiPipe reverses terminology for input/output in this case.)

**7. Load the audio data you wish to replace.**

**8. Insert Drumagog into track.** Open the inserted instance of Drumagog.

**9. In the “Advanced” tab of Drumagog, enable MIDI Out and select the “MidiPipe Input 1.”** (see screenshot below)



**10. Select appropriate MIDI channel.** (1 by default)

**11. Select the MIDI Note that corresponds to the note in Kontakt you wish to trigger** - for example, in a bass drum track you might select “C2” to trigger one of Ocean Way Drums’ bass drum keys in an iMap kit.

Repeat this for all tracks you wish to replace with Drumagog, each time choosing the next consecutive MidiPipe Input (MidiPipe Input 2 for the second instance of Drumagog, MidiPipe Input 3 for the third, etc.)

By adjusting the knobs on the “Main” tab of Drumagog you can further control Drumagog’s interpretation of the audio data. The sensitivity and resolution settings can be set visually by selecting “Visual” at the bottom right corner of the “Main” tab. For instruments mic’d directly with sufficient isolation, the settings will be fairly cut and dry and easily manipulated. However, for instruments mic’d with insufficient isolation, such as overhead mics, the results will be less accurate and consequently harder to manipulate.

Also note that, while triggering Kontakt via MIDI, Drumagog will also replace the selected track with the chosen (or default) audio sample from the Drumagog library. To avoid hearing this, completely turn down the Output knob in the “Main” tab of each Drumagog instance.

**12. Set up an instrument track in Pro Tools.** Insert Ocean Way Drums into this track. In Kontakt/Ocean Way Drums, load your desired kit, preset, etc.

**13. Press play.** This will trigger Ocean Way Drums.

To record real-time replacement, send and record the instrument track to a new stereo audio track.

To manually edit Drumagog’s output, record Ocean Way Drums’ output into the instrument track. From there, using Pro Tools’ editing tools, notes can be deleted, moved, added, or embellished. This instrument track can later be bussed to a stereo audio track for audio recording.