

USING DRUMAGOG TO TRIGGER OCEAN WAY PRO TOOLS, WINDOWS

1. Download/install MIDI-OX and the MIDI Yoke plug-in.

<http://www.midiox.com>

If you have Windows XP, no additional instructions are needed. If you have NT/98/ME/etc., follow the directions on the MidiOX website. If you have Vista, disable the User Access Control (UAC) by following the following instructions.

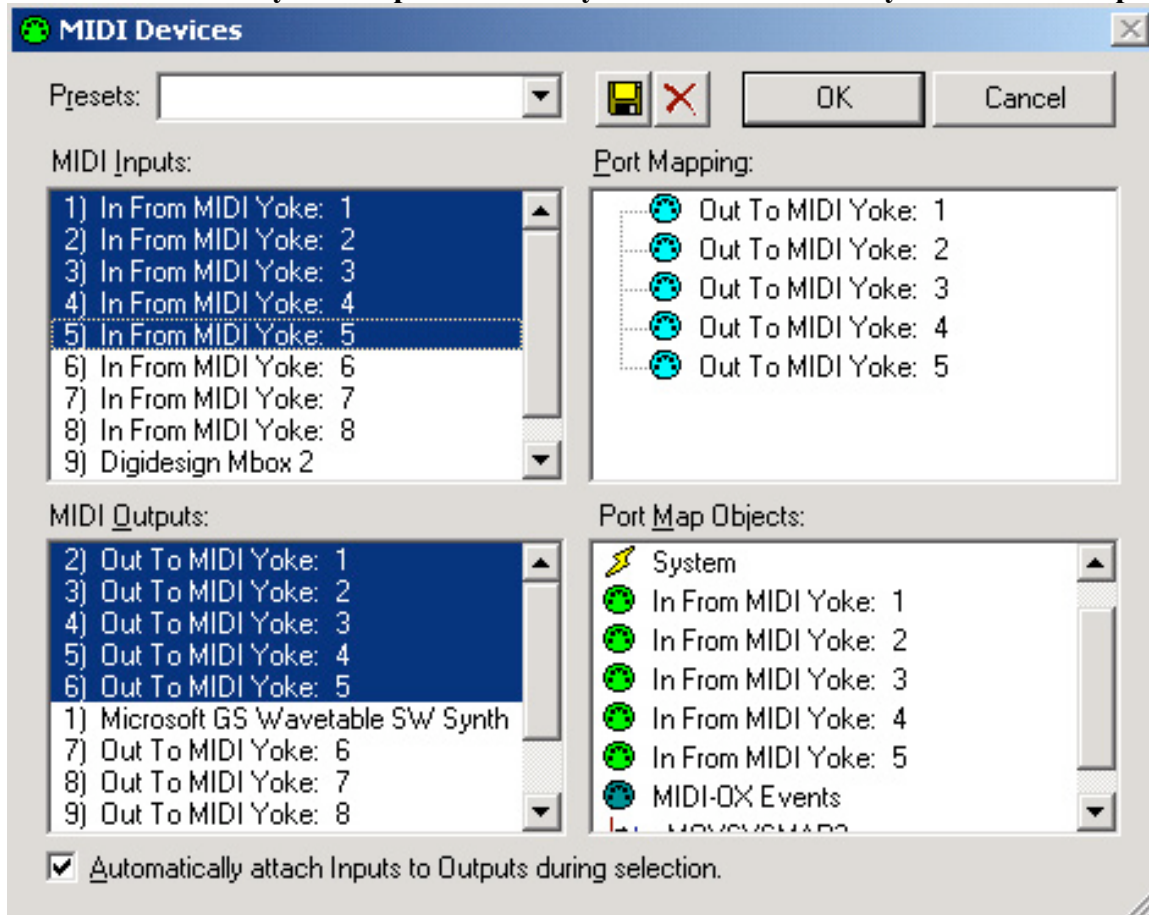
1. Download MIDI Yoke installer
2. Run MSCONFIG from the Run menu
3. Go to the "Tools" menu and select "Disable UAC"
4. Press "Launch" and close the window. Restart.

Midi-OX will be installed as a standalone program, MIDI Yoke is a plug-in (and therefore will not be seen on your desktop, start menu, etc.)

Restart your computer after installation of both of these components.

2. Launch MIDI-OX.

3. In MIDI-OX, go to Options -> MIDI Devices. Double-click the same number of Inputs and Outputs so that they're added to the "Port Mapping" and "Port Map Objects" menus (see screenshot below). It is recommended that you set up ten to twenty sets of in/out so that you will have ample ports to work with.



After setting up your desired virtual inputs/outputs, you can save the configuration as a preset, which can then be loaded as a template for each new session.

LEAVE MIDI-OX OPEN.

4. **Open Pro Tools.** Start a new session or open an existing one.
5. **In Pro Tools, go to Setup -> MIDI -> Input Devices.** Select all MIDI Yoke inputs.
6. **Load the audio data you wish to replace.**
7. **Insert Drumagog into track.** Open the inserted instance of Drumagog.
8. **In the “Advanced” tab of Drumagog, enable MIDI Out and select the “Out To Midi Yoke: 1” MIDI Port.**
9. **Select appropriate MIDI channel.** (1 by default)
10. **Select the MIDI Note that corresponds to the note in Kontakt you wish to trigger** – for example, in a bass drum track you might select “C2” to trigger one of Ocean Way Drums’ bass drum keys in an I-Map kit. (See screenshot below)



Repeat this for all tracks you wish to replace with Drumagog, each time choosing the next consecutive MIDI-OX output (Out To Midi Yoke: 2 for the second instance of Drumagog, Out To Midi Yoke: 3 for the third, etc.)

By adjusting the knobs on the “Main” tab of Drumagog you can further control Drumagog’s interpretation of the audio data. The sensitivity and resolution settings can be set visually by selecting “Visual” at the bottom right corner of the “Main” tab. For instruments mic’d directly with sufficient isolation, the settings will be fairly cut and dry and easily manipulated. However, for instruments mic’d with insufficient isolation, such as overhead mics, the results will be less accurate and consequently harder to manipulate.

Also note that, while triggering Kontakt via MIDI, Drumagog will also replace the selected track with the chosen (or default) audio sample from the Drumagog library. To avoid hearing this, completely turn down the Output knob in the “Main” tab of each Drumagog instance.

11. Set up an instrument track in Pro Tools. Insert Ocean Way Drums into this track. In Kontakt/Ocean Way Drums, load your desired kit, preset, etc.

12. Press play. This will trigger Ocean Way Drums.

To record real-time audio replacement, send and record the instrument track to a new stereo audio track.

To manually edit Drumagog’s output, record Ocean Way Drums’ output into the instrument track as MIDI data. From there, using Pro Tools’ editing tools, notes can be deleted, moved, added, or embellished. This instrument track can later be bussed to a stereo audio track for audio recording.